

# METHODS OF INSPECTION TO DETERMINE THE PRESENCE OF POTENTIAL ARC FLASH INCIDENTS

By Mark Goodman, UE Systems, Inc.

Significant progress has been made over the past several years in understanding the hazards of arcing faults to maintenance personnel working on electrical equipment. The various Standards such as the National Electrical Code require how a piece of electrical equipment is manufactured, labeled and installed, but do not address the hazards associated when the equipment doors are opened and an arc fault or flash occurs.

Arc flash can kill. Arc flash can be considered as a short circuit through the air. It produces tremendous stored-up energy that will travel outward from electrical equipment. An arc flash produces temperatures as high as 35,000oF, which is hotter than the sun and produces a force that is equivalent to being hit by a hand grenade. The impact is so high, it can cause hearing loss and memory loss. If it doesn't kill you, it will severely burn or injure you. In addition, the conditions that produce an arc flash, even when no arc flash occurs, will also lead to damage to electrical equipment causing unplanned outages and costly downtime. Statistics show that 5–10 arc flash explosions occur in electric equipment daily within the United States[1]. Unreported instances are reputed to be several times greater. Many of these victims are so badly burned they require treatment at special burn centers.

In the U.S., the Occupational Safety and Health Administration (OSHA) has become aggressive in their attempts to reduce arc flash incidents and has begun to use the National Fire Protection Association NFPA 70E Standard for Electrical Safety Requirements for Employee Workplaces, 2005 edition[2], as the guide for compliance for worker safety. There are standards for arc flash assessment, various types of PPE (Personnel Protective Equipment), working around energized equipment, and opening enclosed equipment to name a few. All geared for worker safety.

There are many causes of arc flash. It can occur in any electrical equipment regardless of voltage.

Arc flash incidents can be the result of poor work habits, dropping of tools or accidental contact with energized equipment. However, there are conditions that produce the potential for arc flash within enclosed cabinets that can be detected before creating flashover or arc flash incidents. These conditions are arcing, tracking and corona.

While infrared thermography will detect heat generated by arcing and, in most instances, tracking, it will not sense corona. If cabinets are enclosed, unless there is an IR test port, it is highly unlikely that infrared will detect the presence of these emissions. In addition, to view components within enclosed electrical cabinets, it is necessary to conform to NFPA standards with regards to PPE. Therefore, in many situations in IR, inspectors must wear cumbersome clothing and hoods and perform the required procedure to open cabinets for inspection. This can be very time consuming and, in hot weather, very uncomfortable. An integrated approach incorporating infrared and ultrasound is recommended for the detection of the potential of arc flash.



Arcing, Tracking and Corona emissions produce ionization. Ionization is a process by which a neutral atom or molecule loses or gains electrons, thereby acquiring a net charge and becoming an ion; occurs as the result of the dissociation of the atoms of a molecule in solution or of a gas in an electric field[2]. Ionization has by-products: ozone and nitrogen oxides. These combine with moisture to produce nitric acid, which is destructive to most dielectrics and certain metallic compositions, resulting in corrosion.

The object of electric condition

monitoring is to detect the presence of these events before flashover\* occurs or before they produce an arc flash incident when a cabinet is opened.

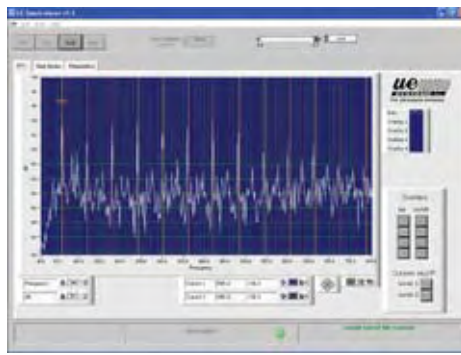
Airborne/structure borne Ultrasound technology is ideally suited for detecting these emissions since the ionization process produces ultrasound. Ultrasonic instruments sense between 20-100 kHz and use heterodyning to translate the ultrasonic emissions into the audible range. These portable instruments provide information via headphones for the audio signal and on a meter to display intensity readings, usually as decibels. These hand-held devices usually contain two sensing heads containing piezoelectric transducers: a scanning module for airborne sounds and a contact probe/wave-guide for structure borne signals.

**HOW PORTABLE INSTRUMENTS ARE USED TO DETECT POTENTIAL FAILURE AND ARC FLASH CONDITIONS**

Typically, an operator will scan around the door seams and air vents of enclosed electrical cabinets with the scanning module while listening through headphones and observing a display panel. Arcing, tracking and corona all have distinct sound qualities that can be heard. If there are no air paths, the inspector will use the waveguide to probe around the cabinet wall. Due to a possible change in wave characteristics as the ultrasound moves from airborne to structure borne, the operator will change the frequency from 40 kHz (effective for airborne scans) to 25 kHz. Should there be a need to analyze these patterns further, the sounds can be recorded and played back on spectral analysis software. Voltage will play a role in the diagnosis since corona will only occur at 1,000 volts and higher.

**THE ADVANTAGE OF SPECTRAL ANALYSIS**

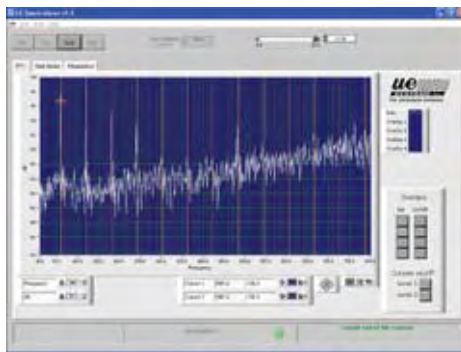
There may be instances where it is difficult to determine the type of problem heard through the headphones. In these situations, a sound recording of the condition can be made (some instruments have on-board sound recording capability) and viewed on spectral analysis software. The sounds may be heard in real time as they are viewed on an FFT or time series screen for analysis. This enables inspectors to observe subtle problems that might be missed by just viewing a screen without sound. As an example, the following screen shows



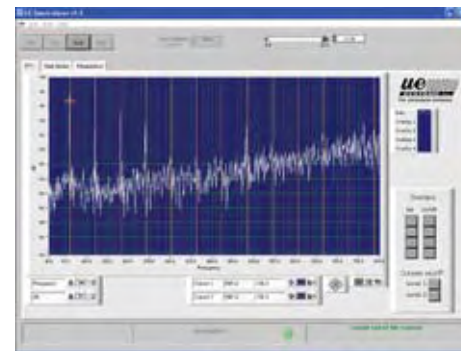
Corona



Tracking



Arcing



Arc Flash

a transformer that had a typical transformer hum. By just observing the screen, the condition of loose windings might have been overlooked. The sound sample, showing a buildup and drop off of the sound along with movement on the screen highlighted this condition (at left).

If any of these conditions are detected, the potential for arc flash exists and operators will be prepared to follow the correct procedures to safely open and repair the condition. Infrared scans can be taken to confirm the diagnosis and to identify any additional problems that would generate heat and not sound.

We are often asked at which voltages and on what type of equipment is ultrasound most effective. The answer is not simple since it often depends on the individual asking the question. First of all, determining the definition of low, mid and high voltages is relative. Those in the power distribution arena will look at 12 kV as low voltage, those who work in a typical manufacturing plant will look on 440 Volts as high voltage. The main electric problems detected ultrasonically are partial discharge, arcing, tracking and corona. Ultrasound detects the ionization of air, as it produces turbulence. This can be from Corona, Tracking or Arcing. Heat is produced when there is either Resistance due to corrosion or from Tracking and Arcing. Since Heat is produced by the flow of current through corrosion or resistance, you can have a "hot spot" detectable with IR, and have no Ultrasound because there would be no ionization.

**LOW VOLTAGES:** The main concern in low voltage equipment is arcing. Typically 110, 220 and 440-volt systems are inspected with infrared imaging and/or spot radiometers for temperature changes. Hot spots, usually an indication of resistance, can be indicative of a potential for equipment failure or could indicate a possible fire hazard. When arcing occurs, it is often accompanied by heat. However, it is not always possible to detect a hot spot if the equipment is covered. Ultrasound will hear arcing in circuit breakers, switches, contacts and relays. In most instances, a quick scan of a door seal or vent will detect the

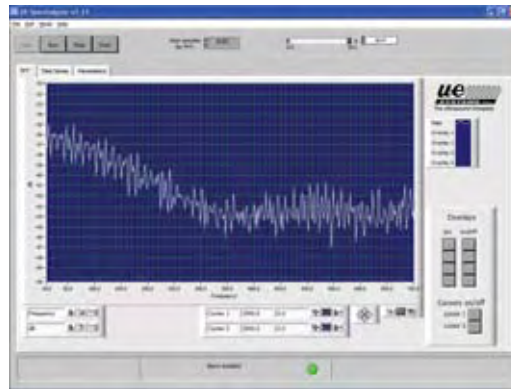
ultrasound emission. Listening for internal arcing in circuit breakers and switches can be accomplished with the contact probe. For example, touch a circuit breaker switch with the contact probe to listen for internally generated arcing. The most effective method of low-voltage inspection will be to combine infrared imaging with an ultrasonic probe. Please keep in mind that since air cannot be a conductor of electricity below 1,000 volts, corona cannot exist. Any “buzzing” sounds are either loose components vibrating at 60 (or 50) Hz or tracking.

**MID AND HIGH VOLTAGE:** Higher voltages often produce more potential for equipment outage. Problems such as arcing, destructive corona or tracking (sometimes referred to as “baby arcing”) and corona as well as partial discharges and mechanical looseness all produce detectable ultrasound that warns of impending failure. Detecting these emissions is relatively easy with ultrasound. The acoustic difference among these potentially destructive events is the sound pattern. Arcing produces erratic bursts, with sudden starts and stops of energy, while corona is a steady “buzzing” sound. Destructive corona has a build up and drop-off of energy resulting in a buzzing sound accompanied by subtle popping noises. While scanning for these emissions, use a parabolic reflector. These accessories can more than double the detection distance of the standard scanning modules.

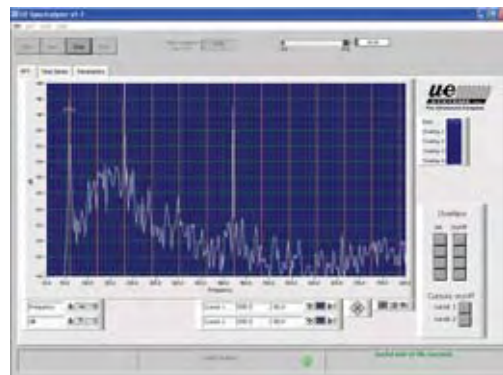
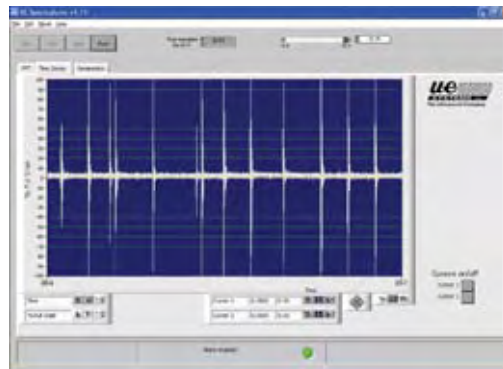
Partial discharge (PD) that occurs inside electrical components such as in transformers and insulated buss bars, is another problem that can be detected with ultrasound. Partial discharge can be quite destructive. It is effected by and causes deterioration of insulation. This is heard as a combination of buzzing and popping noises. The contact probe is employed for PD detection. If your Instrument has frequency tuning, try 20 kHz.

### ANALYSIS OF RECORDED SIGNALS

While it is relatively easy to determine arcing, tracking or corona by the sound pattern, there can be occasions where it may prove confusing. It maybe possible that a strong buzzing sound related to corona



Bad Tracking



Arcing



might in fact be nothing more than mechanical looseness. Spectral analysis and Time Domain can be useful tools in analyzing electric emissions. Since all Ultraprobe instruments heterodyne ultrasound down into the audible range, either the headphone jack or the Instrument itself – Ultraprobe 10000 may be used to record sounds. You must use a suitable recording device that has a suitable bandwidth in the lower frequencies. Digital Voice Recorders are not acceptable as they can only record signals above 300 Hz, which is not low enough to be useful for the 50 or 60 Hz peaks. Laptop Computers, MP3 Recorders or a Quality Cassette Recorders work well for recording the signals in the field. When recording the signals, you need to make certain that the signal is not distorted. On Analogue instruments, you should not let the signal go over 50% of full scale on the signal strength indicator. On Digital Instruments, you should try to maintain the signal strength to between 4 to 6 segments of the bargraph.

These sounds can then be downloaded to a PC with a sound card and viewed as a spectrum or time series for analysis. It is necessary to examine both the Spectrum and the Time Domain images when you are trying to evaluate what is going on. The main harmonic of an electrical emission (60 Hz in the USA, 50 Hz elsewhere) will be most prevalent in corona. As the condition becomes more severe, there will be fewer and fewer 60 Hz harmonics observed. As an example, arcing has very few 60-cycle components. Mechanical looseness will be “rich” in 60 Hz Harmonics and will have little frequency content between the 60 Hz peaks and will also demonstrate harmonics other than 60 Hz.

Examining the Time Domain image can also be of help. In the case of Corona, you will have a uniform band of signal with very few peaks that extend above the average “band”. With Tracking, you will begin to see the peaks created by the discharges extend above the average “band”. With Arcing, you will see several “bursts” of energy that correspond with the discharges. In all cases, both the Spectrum and the Time Domain should be examined before the final

determination is made.

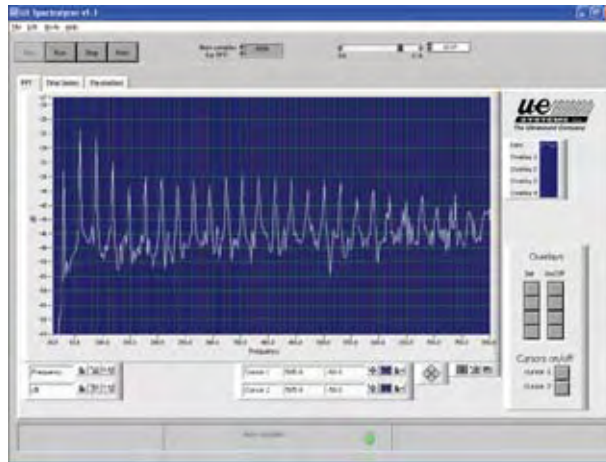
Below you will find examples of both the spectrum and Time Domain views of the varying degrees of severity of discharge to atmosphere.

**NEW ON-LINE CONDITION MONITORS**

While a great majority of the inspections around energized electrical equipment incorporates portable instruments, these inspections are limited in their ability to protect equipment from failure or from an arc flash potential from going undetected. The limitations are time based. If an inspector is testing at the time any of these incidents is occurring, there is a good chance they will be detected and reported for corrective action.

But, unlike mechanical conditions which are usually detected first and then trended to specific action levels, once arcing, tracking or corona is present, there is a potential for failure and arc flash that can occur at any time. Therefore, there is need for continuous on-line monitoring of enclosed electrical equipment.

An electrical cabinet monitor is mounted on the internal side of a door or wall facing the components. Utilizing an airborne scanner, a threshold level is set. Should an event of arcing, tracking or corona occur, the sound level will be above the ambient threshold and be detected. A 4-20 mA or 0-10 VDC output can be selected to carry the signal to an alarm mechanism or red light alert. In addition, these units contain a heterodyned signal to provide recording capability for record



Loose or vibrating component

keeping and analysis purposes.

The advantage to on-line monitoring is obvious, it is not operator dependent and will continuously monitor. Whenever a condition occurs to produce the potential for arc flash or flashover, it will be sensed and alarmed instantly.

**CONCLUSION**

Ultrasound inspection is an effective screening tool for detecting the potential for arc flash incidents. When hand-held ultrasonic instruments are used to scan enclosed electrical apparatus the procedure is fast, accurate and simple. It can help inspectors by eliminating the need for wearing cumbersome, uncomfortable PPE during a preliminary survey. On-line continuous monitors can alarm personnel of the presence of arcing, tracking and corona in advance of an inspection.

**REFERENCES**

\*Flashover (according to Merriam-Webster's New Collegiate Dictionary) is an abnormal electrical discharge (as through the air to the ground from a high potential source or between two conducting portions of a structure).

1. "Preventing Arc Flash Incidents in the Workplace", George Gregory: EC&M June 2003
2. National Fire Protection Association, 1 Battery March Park, Quincy, MA 02269-9101

**YOU SAID IT...**

"I enjoy reading your publication."  
Richard Kelly, Manager, Safety Services, Government of Nunavut, Iqaluit, Nunavut.

"I find your magazine interesting and concise, especially with regard to industry trends. Keep up the good work."  
Sid Savage, Electrical Engineering Specialist, NAV CANADA, Ottawa, Ontario.

"I read your magazine to keep current in the electrical contracting field."  
Robert May, Owner, Rmay electric, Toronto, Ontario.

"Very good magazine."  
Dennis McIntee, President, Coastal Pacific Electric Ltd., Richmond, British Columbia.

"I find your magazine very informative by keeping me up to date on changes in commercial and industrial facilities. While most of my work covers airfield lighting equipment, I also get involved in Air Terminal buildings and Field Electrical Centres covering a wide range of electrical equipment."  
Joseph Lavallee, Electrical Systems Technologist, Transport Canada, Edmonton, Alberta.

"Very interesting magazine, contin-

ue your good work. Thank you."  
Michael Ferraro, Plant Manager, Tiger-Vac International, Laval, Quebec.

"As an electrical inspector I am not in a position to purchase new products, but I have found the Canadian Electrical Forum to be a valuable tool that I can use to bring the latest electrical information and products to my clients."  
Robert S. Kreiger, Electrical Safety Officer, B.C. Safety Authority, Salmon Arm, British Columbia.

"Good magazine."  
Brent Sahn, E/I Superintendent, Domtar Pulp & Paper Products, Kamloops, British Columbia.